

Cardiovascular Stem Cell Therapy

Results



Cardiovascular Stem Cell Therapy

Results

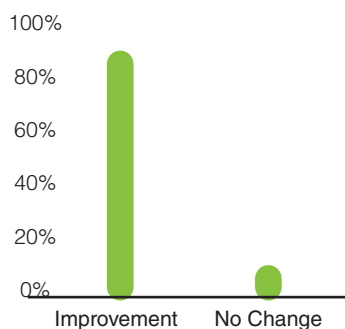
A total number of 21 patients with heart complications were put under observation after the ischemic heart disease therapy.

A whopping 88% of the patients showed clinical improvements.

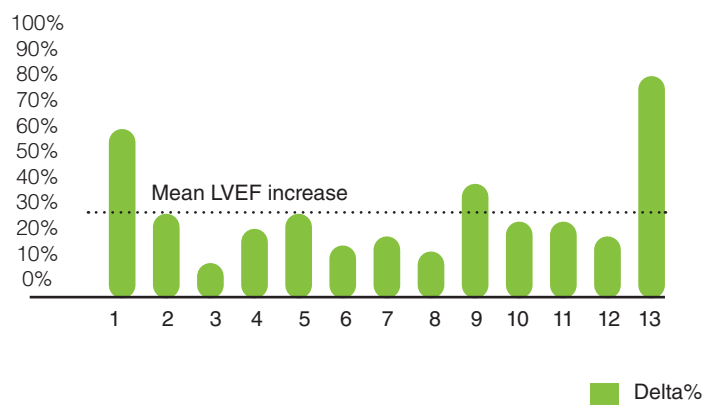
Few of the various improvements reported were - less shortness of breath, reduction in medication, less weakness, less tiredness and less edema. In one case the pacemaker could be turned down.

The average percentage of development of the Left Ventricular Ejection Fraction (LVEF) which is a measure of the heart function was 24.2%.

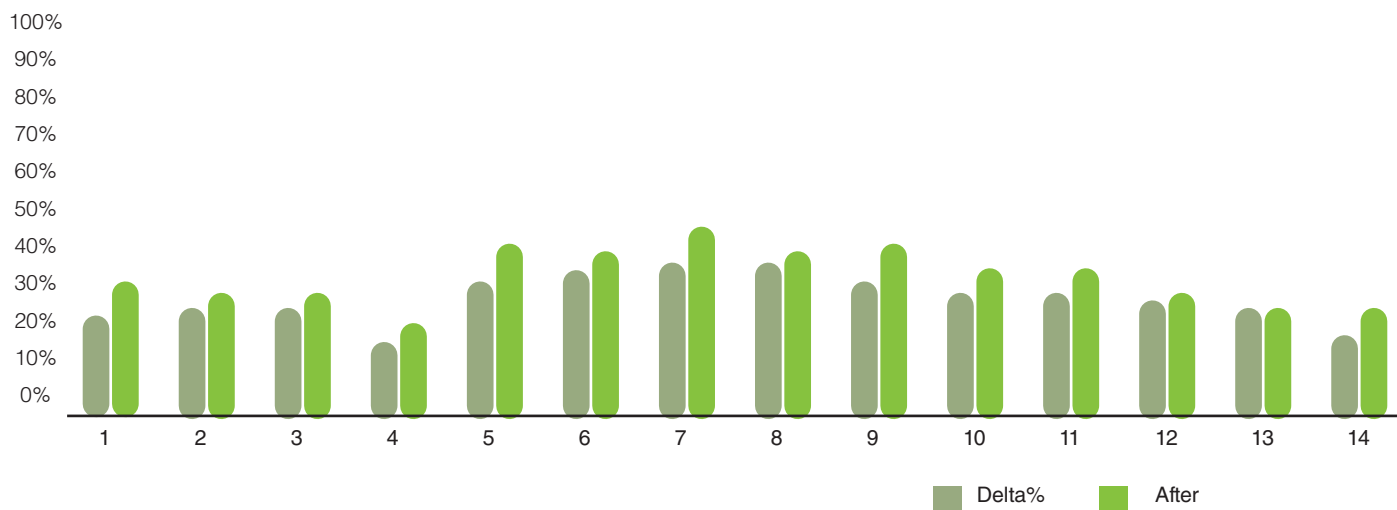
Percentage improved heart disease patients



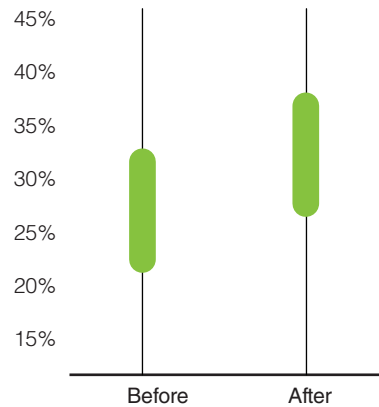
Improvements of LVEF



LVEF - values before and after treatment



LEVF befor and after ASCT01 treatment



Results From Adipose Derived Stem Cells

Trial I

Congestive Heart Failure

Methods :-

- 60 cc's adipose tissue removed via local tumescent anesthesia
- Fat washed to remove red blood cells
- Enzymatic digestion with Adipolase
- Centrifugation to separate stromal vascular fraction
- Washing and filtration
- Cell delivered to patient

Criteria :-

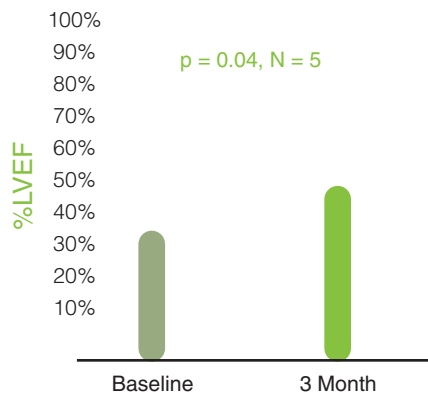
- Intramyocardial delivery via MyoCath catheter
- Number and frequency Of adverse events
- Changes in left ventricular ejection fraction (LVEF)
- Exercise capability
- Quality Of life

Results :-

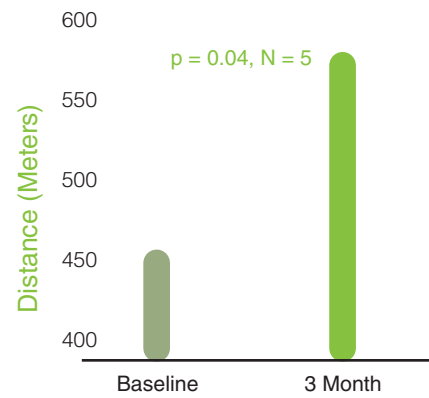
- 615 patients treated
- Average improvement Of 11 points in LVEF
- Average increase of 128 meters in 6 minute walk exercise capacity test



Bioheart MyoCath™



Left Ventricular Ejection Fraction



Exercise Capacity - Six Minute Walk Distance

Conclusions :-

- Adipose tissue is readily available and a plentiful source Of Stem cells
- Preliminary data for COPO CHF and wound healing demonstrates strong safety profile in patients.
- ADSCs can be utilized in degenerative diseases to promote reduction of inflammation and healing.



Trials & Results Collaborated by :



Trial II

ANGEL TRIAL

Product Specifications :-

- ADSC from 60 cc's Of fat processed at point Of Care in 35 minutes
- Delivered intra-myocardialy Via Catheter in 4 ml Saline

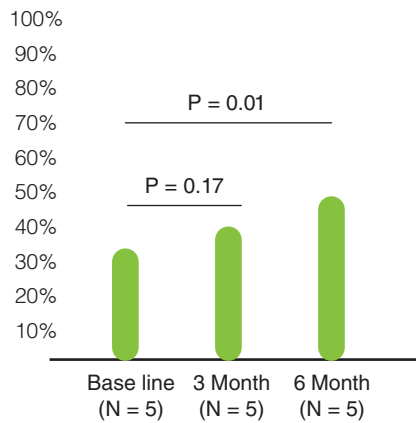
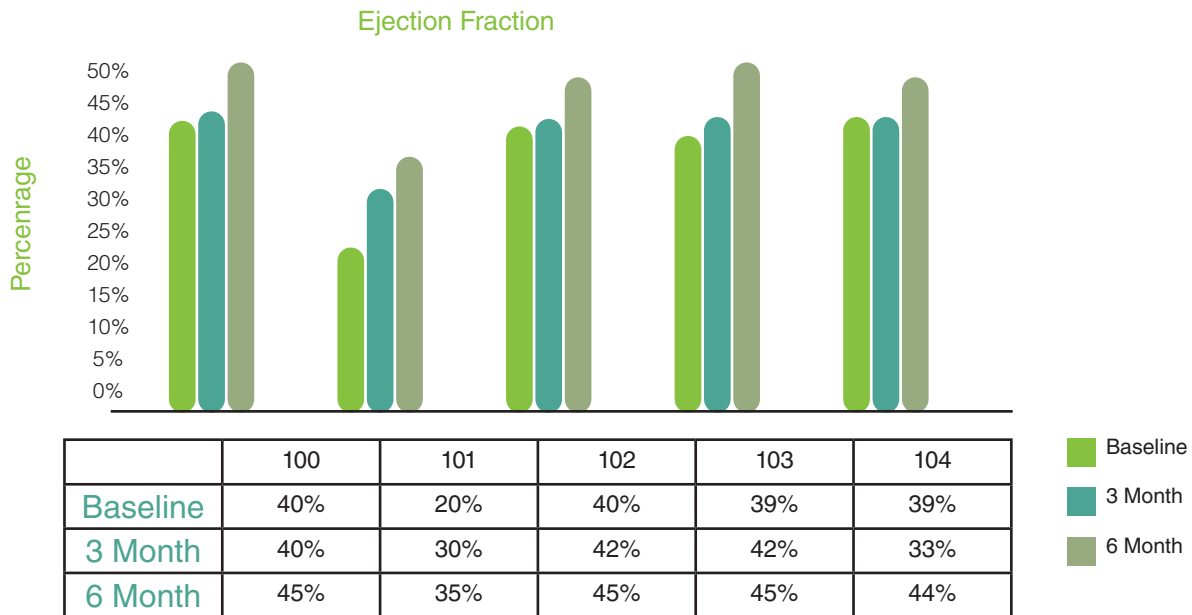
Co - Primary Efficacy Endpoints :-

- Exercise capacity (6 min walk test)
- Quality of life (MLFHF)

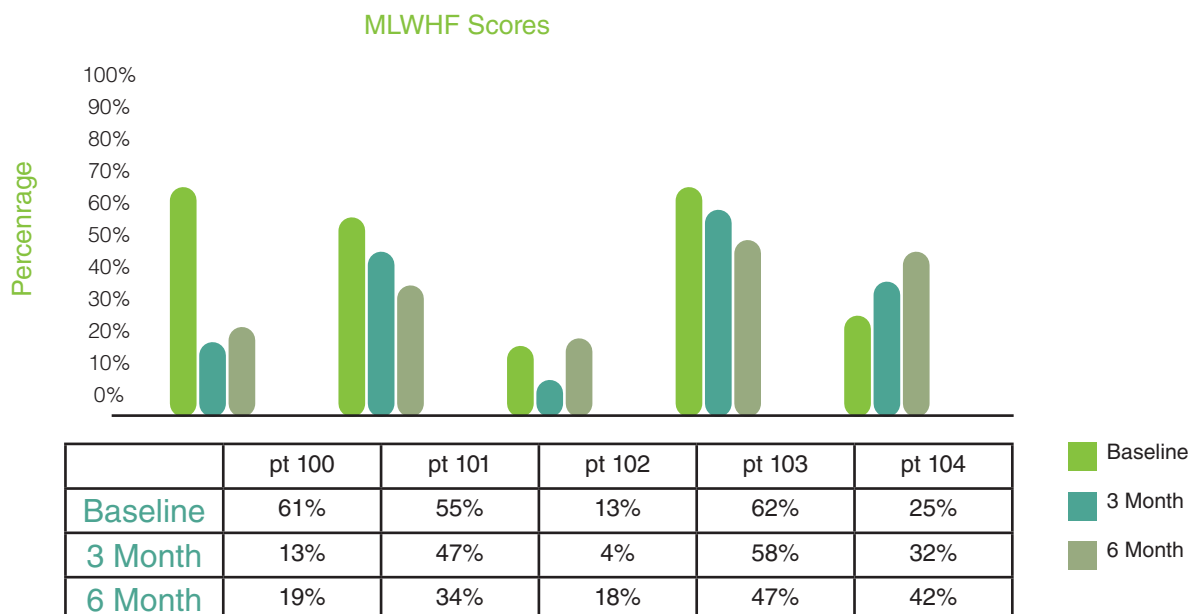
Secondary Efficacy Endpoints :-

- Ejection Fraction

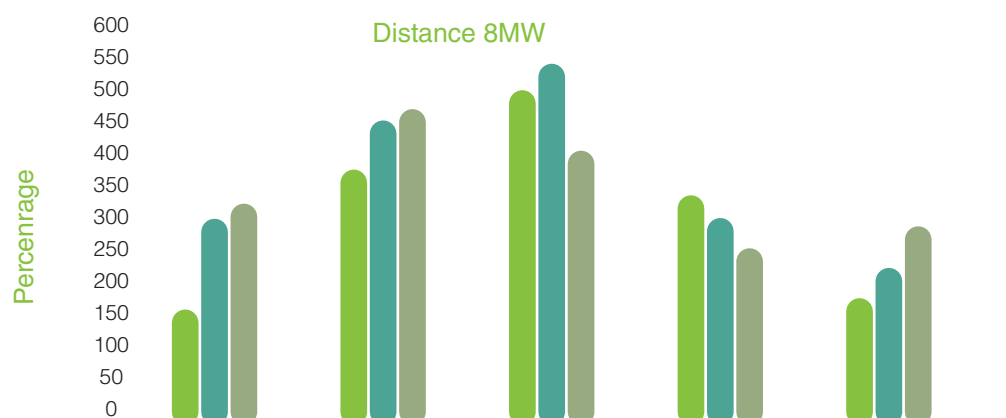
Left Ventricular Ejection Fraction



Minnesota Living with Heart Failure



Exercise Capacity



Baseline

3 Month

6 Month

