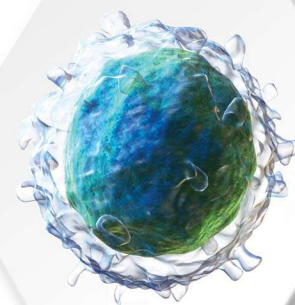


# Kidney Disorder





**Advancells Group** believes in the vision of a cure-driven world. Established in 2013 by **Mr. Vipul Jain**, Advancells provides customized protocols for 360° management of diseases and conditions with regenerative medicine as a solution. We believe in promoting stem cell awareness to ensure that patients and caregivers, worldwide, know their role in the regeneration of damaged body tissues for neurodegenerative, musculoskeletal, organ-damage, and aging disorders.

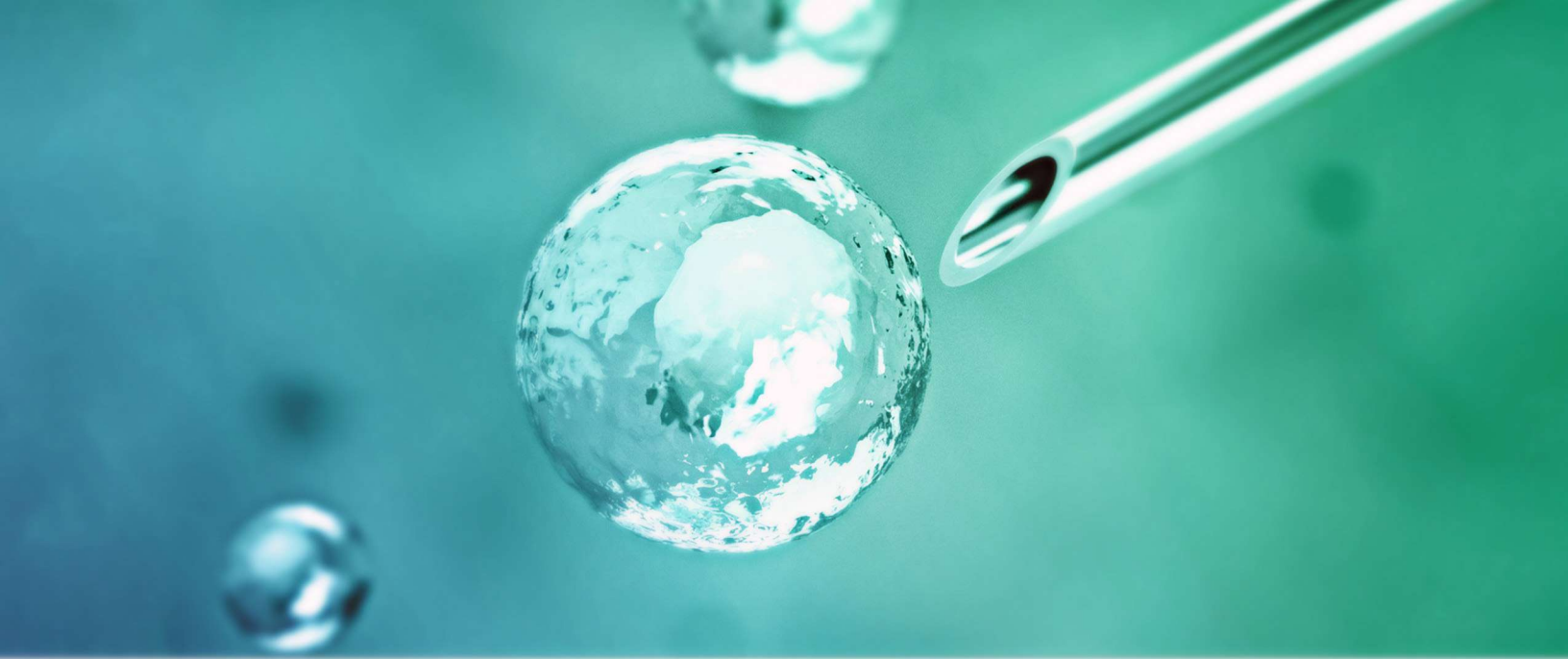
With the **CMO Asia Healthcare Excellence Award** and the **Healthcare and Lifescience Award** (Corporate LiveWire) adorning our achievements, we provide the best medical consultation with value to treatment aesthetics and patient consent. Besides patient-friendly therapeutics, we also aid efficient biomedical research with our customized stem cells and primary cells, as it precedes every clinical translation that can help our future generation.

## NEURODISORDERS FOR REGENERATIVE THERAPY

- ALZHEIMER'S DISORDER
- PARKINSON'S DISORDER
- AUTISM
- ALS
- MULTIPLE SCLEROSIS
- STROKE
- **MUSCULAR DYSTROPHY**
- CEREBRAL PALSY

# WE ARE HERE TO HELP





# TABLE OF CONTENTS

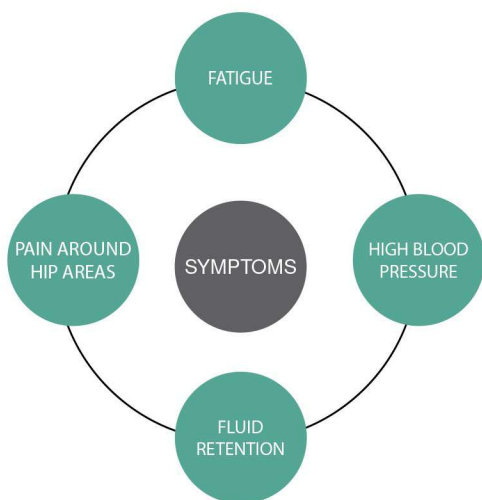
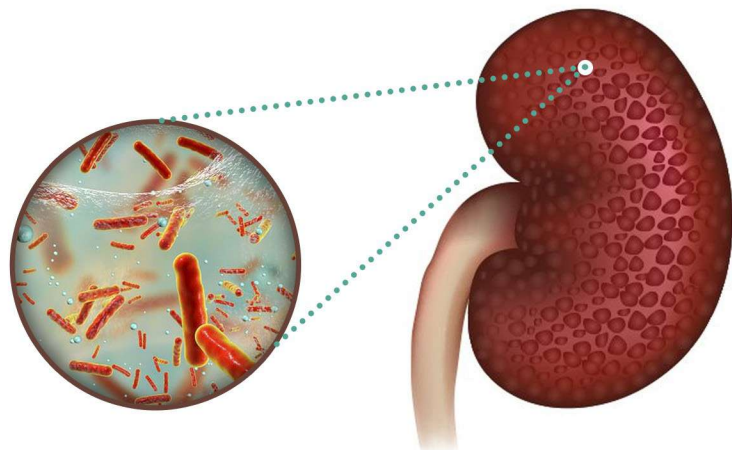
01.	ABOUT MUSCULAR DYSTROPHY	03	02.	STEM CELL TREATMENT	04
03.	CELL THERAPY MANAGEMENT	05	04.	WHY SHOULD YOU CHOOSE ADVANCECELLS?	06
05.	SPECIAL SERVICES FOR INTERNATIONAL PATIENTS	06	06.	EACH CASE IS SPECIAL FOR US	07
07.	TECHNOLOGY CALLING	08	08.	STEM CELL THERAPY SUCCESS RATE	08
09.	REHABILITATION PROCESS	09	10.	PATIENT TESTIMONIALS	10
11.	CERTIFICATES	10			

# What is Kidney Disorder?

■ Damage to the Kidneys.

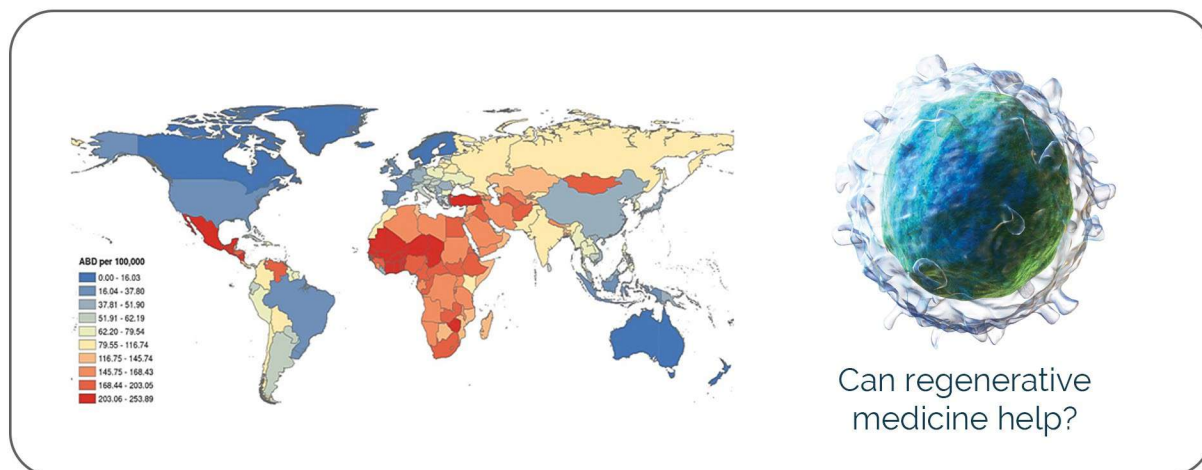


**15%** ADULTS ARE ESTIMATED TO HAVE CHRONIC KIDNEY DISEASE-THAT IS ABOUT 37 MILLION PEOPLE.



The kidneys help in establishing the correct balance of minerals and salts in our blood, besides filtering out toxins and generating several important hormones. Kidney diseases are caused by nephron damage, which can be sudden and short-lived (acute) or slow and progressive (chronic). Acute kidney disease deals with sudden drop in kidney function, usually caused by blood loss or injury, which might occasionally lead to lasting kidney damage. Chronic kidney disease, on the other hand, deals with the loss of a third or more of kidney function. In chronic cases, kidney function worsens over a number of years while the problem often goes undetected for many years because the effects are relatively mild.

Conventional treatment of drugs, dialysis and transplants, besides rehabilitation therapies, do hinder the progress rate of the disorder but there has been no disorder reversal with these treatment regimes. With recent scientific advances and research in stem cell therapeutics, kidney disorders may have a new disease-reversal hope in the form of Regenerative Medicine.





# **STEM CELL** *Treatment for* **Kidney Disorder**

- Enhanced renal regeneration.
- Reduced fatigue and headache.
- Reduced pain in the hip areas.
- Reduced risk of underlying diseases.

## **Regenerative Medicine**

Stem cells have the unique potential to undergo self-renewal as well as differentiate into cells of neuronal origin in the body upon natural stimulation.



### ***What can you expect?***

Majority of the patients have shown improved results upon undergoing stem cell therapy with dialysis procedures. Kidney disorder patients have also experienced reduced body fatigue, headache and hip pain.

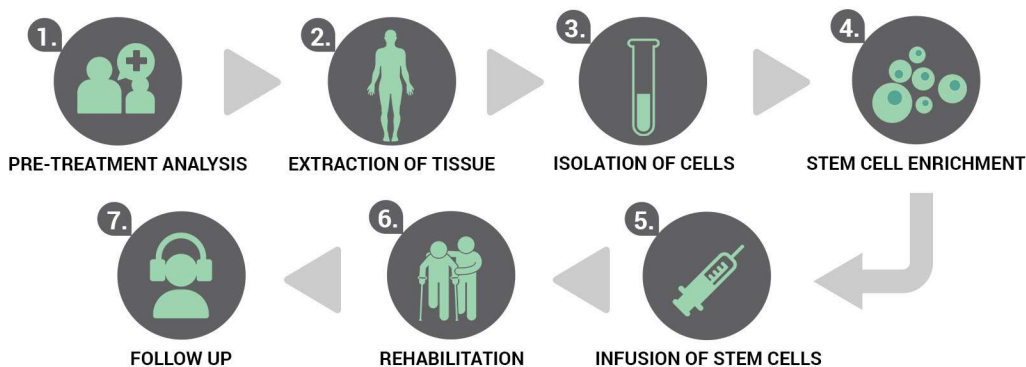
Although type and extent of improvement is patient specific, some of the common benefits that you can expect after stem cells treatment for kidney disorders are:

- Reduced headache and weakness.
- Improved renal functioning and regeneration.
- Reduced pain and fluid retention.
- Improved immunological and inflammatory functions based on pre-treatment and post-treatment marker analysis.



# Cell Therapy Management

Establishment of day care procedure.



## PRE-TREATMENT procedure

Complete assistance will be given to the patient in all pre treatment procedures such as consultation, hospitalization (If required), Assessment.

### ■ Eligibility Criteria

#### Pre-Treatment Assessment

- Routine Blood Test
- Routine Urine Analysis
- Infectious Disease Testing
- Physical Examination
- X-Ray

#### Pre-Op Procedure

- MRI
- CT Scan
- Neurophysiology
- Medical Neurological Reports
- Medical History

## EXTRACTION of tissue sources

Generally the entire procedure takes around 7-8 hrs including 1-2 hrs of source aspiration, 2-3 hrs of stem cell isolation and another 1-2 hrs in injecting cells. The processing of sample is done in a state-of-the-art class 10000 clean room facility wherein we strictly adhere to maintain quality of standards. Wherein the extracted sources undergo minimum manipulation such as been spun in a centrifuge to cull out a stem cells.

## TARGETED delivery

Once isolated, intensified and ready for reinstalling back into the body, we work out different mode of implantation: depending upon patient's health condition.

### ■ Intravenous Administration

Cells will be infused directly into the vein to be able to circulate in the vascular system. This may further help to induce immediate signaling pathways to direct cells to the site of injury.

### ■ Intra-thecal Administration

Intrathecal administration is the infusion of stem cells via injection into the spinal canal, most popularly known as **Lumbar Puncture**.

### ■ Intra-muscular Administration

Intra muscular injection is infusion of stem cells directly into the muscles. Clinical results have further indicated that a combination of intramuscular injections with more than one infusion protocol is much more beneficial in promoting the regeneration and functional recovery of musculoskeletal environment.

## REHABILITATION

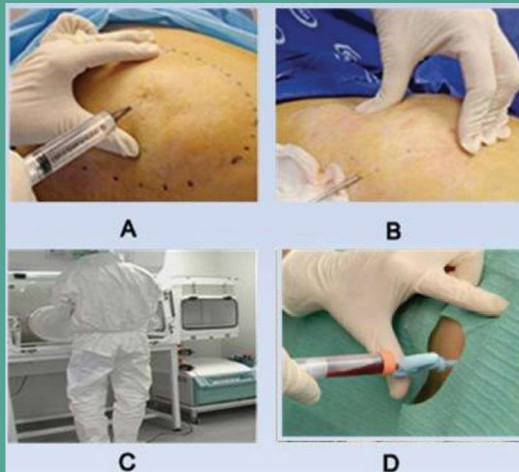
Post treatment care involves multiple reclamation therapies for accelerated recovery. Advancells is recommending range of therapies as discussed later.

## Bone Marrow Extraction



- A. Application of local anesthesia.
- B. Bone Marrow collection by needle insertion in the hip bone.
- C. Isolation of Stem Cells in the clean room.
- D. Intra-thecal Injection of stem cells.

## Adipose Tissue Extraction



- A. Application of tumescent anesthesia.
- B. Adipose Tissue collection by lipoaspiration.
- C. Isolation of Stem Cells in the clean room.
- D. Intra-thecal Injection of stem cells.

# Why Should YOU choose Advancells?

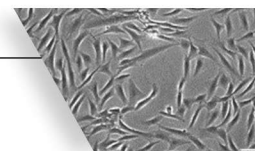
## 01 AUTOMATED and CLOSED System

At Advancells, stem cell therapy is performed under the supervision of medical experts in a multi speciality hospital and cells are processed in the state-of-the-art GMP compliant laboratory i.e. fully functional with automated equipments.



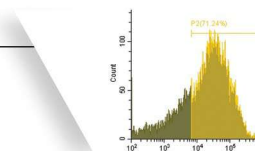
## 02 HIGH Quality of Cells

At Advancells, we ensure that cells are of best quality; and hence we perform a thorough **Quality Assessment** by experienced scientists. We provide a detailed certificate of analysis to each patient further authenticating the cell quantity and viability.



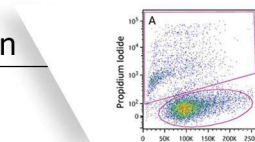
## 03 Disease-Specific MARKER Analysis

Our clinical research scientists do a thorough disease-specific marker analysis both **pre and post-treatment** to ensure subjective reduced expression levels of the same, thus showing evidence based assesment of improvement in each case. Reports are shared to confirm physiological improvement.



## 04 HIGH Concentration Enriched with MULTIPLE Cell Population

The treatment procedure is performed using a high concentration of viable cells with multiple cell population, created from a very small portion of the tissue.



## 05 SAFE Treatment Procedure

The procedure is completely safe and has not detected any adverse events throughout the globe.



## 06 PATIENT SATISFACTION Assurance

Our medical team assures you treatment aesthetics and formal consent for your stem cell therapy. We prioritize patient follow-ups to ensure that your health improvements ascend with our therapeutic solutions.



## 07 Globally Recognized HEALTHCARE

Advancells Regenerative Medicine solutions have been globally recognized with the CMO Asia Healthcare Award for the Best Product Innovation and Quality Initiative. We were also privileged to host His Royal Highness, the king of Kuwait, for regenerative therapy during his 2017 visit.



## Special services for International Patient

- Assistance in Visa and planning travel itinerary.
- Assistance in getting comfortable accommodation in nearby location.
- Travel Assistance for sight seeing.
- Assisting with your interpretation services.
- Assisting with multiple payment options.
- Expedite arrival with fast track registration.





# Each Case is Special For Us,

Therefore Every Cell has to pass through a Stringent Quality Control Parameter.

## ■ Clinical Definition of Stem Cells

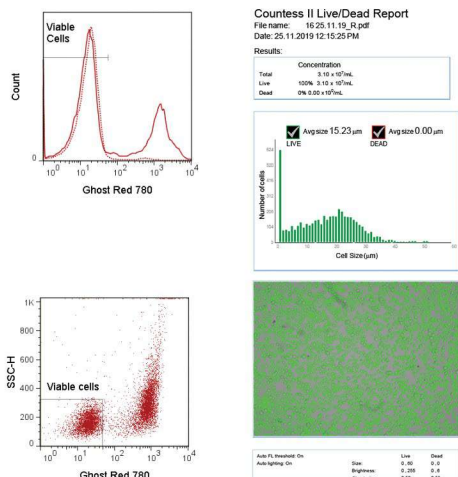
- Stem Cells are the mother cells of our body.
- They can divide unlimited times.
- Can differentiate into any cell type.
- Can be exploited to treat diseased condition.

At Advancells, we provide a high concentration of viable stem cells with enhanced differentiation potential for our treatment procedure. The patient derived stem cells are checked for mycoplasma and endotoxin contamination after isolation from the patient's body.

The stem cell suspension are checked for both gram-positive and gram-negative bacterial load during procedure for preventing any bacterial infection upon re-injecting them to the patient's body.

### 1.

#### Characteristics of Stem Cells



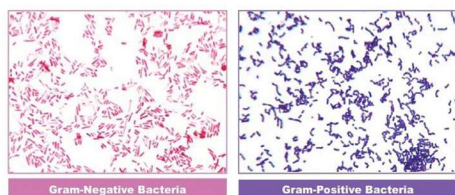
### 2.

#### Mycoplasma Detection



### 3.

#### Detection of bacterial containment



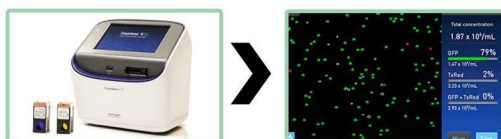
### 4.

#### Endotoxin Analysis



### 5.

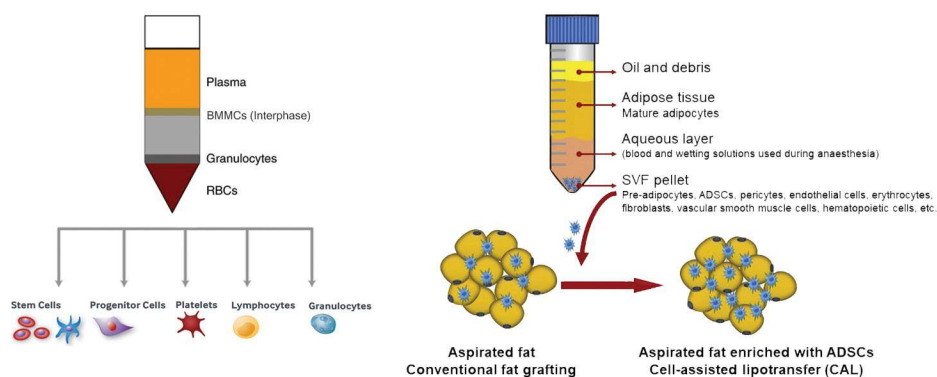
#### Viable Cell Count & Analysis through Automated cell counter



Analysis report		
Viable cell count at the time of dispatch: x * x <sup>6</sup> cells		
Mycoplasma : Negative	Endotoxin : Negative (Qualitative Test > 0.2EU/ml)	
Marker Analysis (Reference Document No: 0024GI001552):		
Markers Detected	Interpretation	Percentage
xx	Positive/ Negative	xx%
xx	Positive/ Negative	xx%
xx	Positive/ Negative	xx%

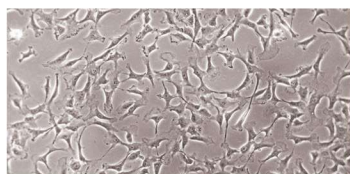


## Technology Calling...



### Bone Marrow derived mononuclear cells

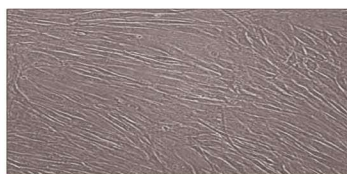
Neutrophil	72.3%
Eosinophil	1.8%
Lymphocyte	12.1%
Monocyte	2.8%
Nucleated Erythrocyte	8.9%
Blast Cells	1.6%



Bone Marrow Stem Cells promote vasculogenesis and differentiation to enhance blood circulation.

### Stromal Vascular Fraction

Endothelial Cells	25%
Myeloid Cells	22%
Monocyte	20%
cKit <sup>+</sup> Progenitor Cells	5%
CXCR4 <sup>+</sup> Multipotent Cells	2.5%
PDGFR-β <sup>+</sup> Perivascular Cells	20%



Pre-Adipocytes are known to produce cells of neuronal origin and regularise inflammatory immune responses.

★ Wide Range of other cell types such as Mesenchymal Stem Cell are available for therapeutic operations.

## Stem Cell Therapy Success Rate

Symptoms	Percentage Improvement
Social Interaction	67.30
Eye Contact	81.06
Attention/ Concentration	83.41
Stereotypical behaviour	54.30
Aggressiveness	59.04
Hyperactivity	66.49
Self-Injurious Behaviour	61.33
Sitting Tolerance	87.93
Command Following	85.43
Speech	60.48
Communication	61.27
ISAA	94.23
CARS	95.67

## FACILITY & EXPERTISE





# Rehab is *important*

- Exercise Training
- Diet Management
- Fluid Management
- Vocational Counseling
- Psychological Counseling

## *How should I choose a good center for stem cell therapy?*

The following criteria should be kept in mind:

- A center with all types of regulatory compliance & certifications.
- Specialized in offering safe & viable stem cells which is further certified through CoA.
- A centre with good technical expertise & good infrastructure.



People suffering from muscular dystrophy require long-term medical management, understanding, and care. Besides seeking treatment from experienced medical personnel, the multi-modal regenerative treatment array might include a variety of rehabilitation therapies based on physio and HBOT to improve their rate of potential cure and cognition.

- Reduce pain and uneasiness.
- Reduce fatigue and weakness.
- Improve posture, cognition, and motor skills.
- Improve focus and concentration in daily activities.



## Let's Hear it from the Patients.. .

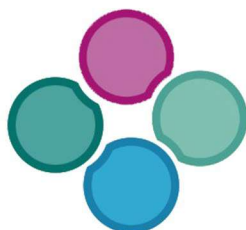
### ■ MR. K SINGH, 34 YRS

Mr. K Singh was a chronic kidney patient with critical levels of serum creatinine of up to **10.3**. After the stem cell therapy procedure, within two months of treatment, his creatinine levels came down to 8.80. This clear indication of limiting disease progress significantly led to the process of renal improvement for Mr. K Singh. In the next follow up sessions, after six months of treatment, the creatinine levels were down to **5.9**. Stem cell therapy helped to achieve a stark improvement in Mr. K Singh's condition and we hope further dialysis procedure will help in sustaining the renal function.



## Certifications





# Advancells

## G R O U P

Shaping the Future



advancells  
THE POWER TO CURE



A-102, Sector 5, Noida, India - 201301



+91-96543 21400



+91 120 425 0694



info@advancells.com



www.advancells.com



www.advancellsgroup.com



+91-96543 21400



+91-96543 21400



/advancells



/advancells



@advancells



/company/advancells/